

ISUR3

3-1/2" URBAĪ Series

Classic IC and Air Tight New Construction Housing

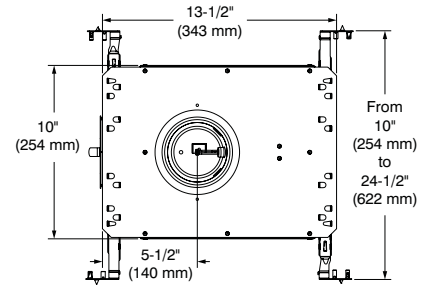
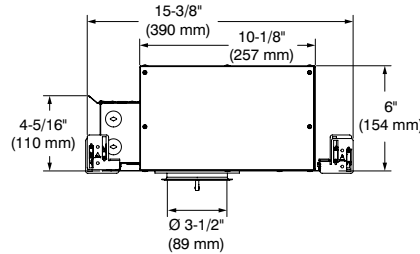
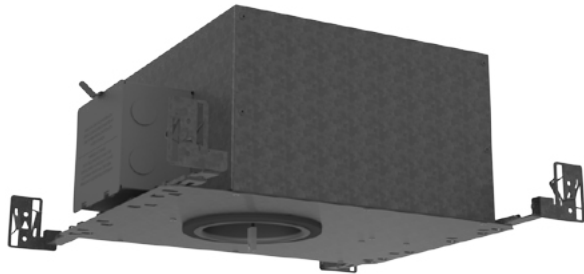


Project _____

Notes _____

Fixture Type _____

Date _____



SPECIFICATIONS

HOUSING DETAILS	MOUNTING	PERFORMANCE	VOLTAGE
<p>Up to 0,051" (1,3 mm) thick galvanized steel housing with integrated "IC" box.</p> <p>Approved for installation in insulated ceilings and in direct contact with insulating material (except polyurethane).</p> <p>Conformity option for direct contact with polyurethane in performance 1 only (P option). 33-1/2 in³ junction box.</p> <p>Below-ceiling accessible.</p>	<p>Cutout diameter: ø 3-5/8" (92 mm)</p> <p>Can fit ceilings up to 2" (51 mm) thick.</p> <p>Requires a 6" (152 mm) clearance beyond the ceiling material.</p> <p>Snap-in hooks for ease of installation and a perfect fit to ceiling.</p> <p>Mounting bars extend from 10" (254 mm) to 24-1/2" (622 mm) to fit in most ceilings.</p> <p>No light leakage.</p>	<p>1: 10W IC - up to 1,018 lms</p> <p>2: 15W IC - up to 1,326 lms</p> <p>Warm Dimming: 15W - up to 650 lms</p>	<p>120 Volts</p> <p>277 Volts</p>
DIMMING	COMPATIBLE TRIMS	CERTIFICATION	WARRANTY
<p>ELV: 120V only</p> <p>0-10V: Sourcing driver (Sinking Control) 120V or 277V</p> <p>We invite you to consult frequently our Website to find our dimmer compatibility list: www.contrastlighting.com</p>	<p>UR3A, UR3B, UR3C, UR3E, UR3F, UR3G, UR3H, UR3J.</p>	<ul style="list-style-type: none"> cULus E343977 for damp locations; wet with shower trim only. ASTM E283 Chicago City code compliance option available (Chicago Plenum (P option)). 	<p>1 year on components against manufacturing defects.</p> <p>5 years on LED arrays and drivers.</p>

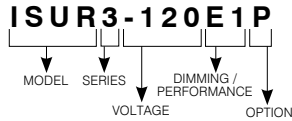
ISUR3

3-1/2" URBAĪ Series

Classic IC and Air Tight New Construction Housing



CODIFICATION EXAMPLE FOR 120V

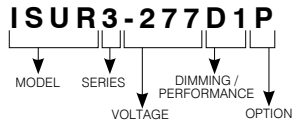


ORDERING CODE for 120V

MODEL	SERIES	VOLTAGE	DIMMING / PERFORMANCE	OPTION
ISUR	3	-120		
ISUR Classic IC and Air Tight New Construction	3 3-1/2" Series	-120 120V	E1 ELV / 10W E2 ELV / 15W EB2 ELV (+Value) / 15W D1 0-10V / 10W D2 0-10V / 15W	P* Chicago Plenum and Polyurethane

* **Chicago Plenum / Polyurethane with performance 1 (E1P and D1P)**
Chicago Plenum only with Performance 2 (E2P, EB2P and D2P)

CODIFICATION EXAMPLE FOR 277V



ORDERING CODE for 277V

MODEL	SERIES	VOLTAGE	DIMMING / PERFORMANCE	OPTION
ISUR	3	-277		
ISUR Classic IC and Air Tight New Construction	3 3-1/2" Series	-277 277V	D1 0-10V / 10W D2 0-10V / 15W 2 Non-Dimmable / 15W	P* Chicago Plenum and Polyurethane

* **Chicago Plenum / Polyurethane with performance 1 (D1P)**
Chicago Plenum only with Performance 2 (D2P and 2P)

ISUR3

3-1/2" URBAĪ Series

Classic IC and Air Tight New Construction Housing



GOOF RINGS

For round trims.

Code: RR3-03SA (Satin Gold)
 RR3-04BR (Brushed Chrome)
 RR3-11 (Matte White)
 RR3-12BR (Brushed Nickel)
 RR3-13 (Satin Nickel)
 RR3-22 (Matte Black)

Outside diameter: \varnothing 6-1/8" (156 mm)
 Inside diameter: \varnothing 3-11/16" (94 mm)

For square trims.

Code: RS3-03SA (Satin Gold)
 RS3-04BR (Brushed Chrome)
 RS3-11 (Matte White)
 RS3-12BR (Brushed Nickel)
 RS3-13 (Satin Nickel)
 RS3-22 (Matte Black)

Outside dimensions: 5" (127 mm) x 5" (127 mm)
 Inside diameter: \varnothing 3-11/16" (94 mm)

OPENING ADAPTOR

For round trims only.

Can lip adaptor for 3-1/2" (89 mm) pot in a 4-1/4" (108 mm) opening.

Finish: Galvanized steel

Code: 312296

Outside diameter: \varnothing 4-5/16" (110 mm)
 Inside diameter: \varnothing 3-5/8" (92 mm)