






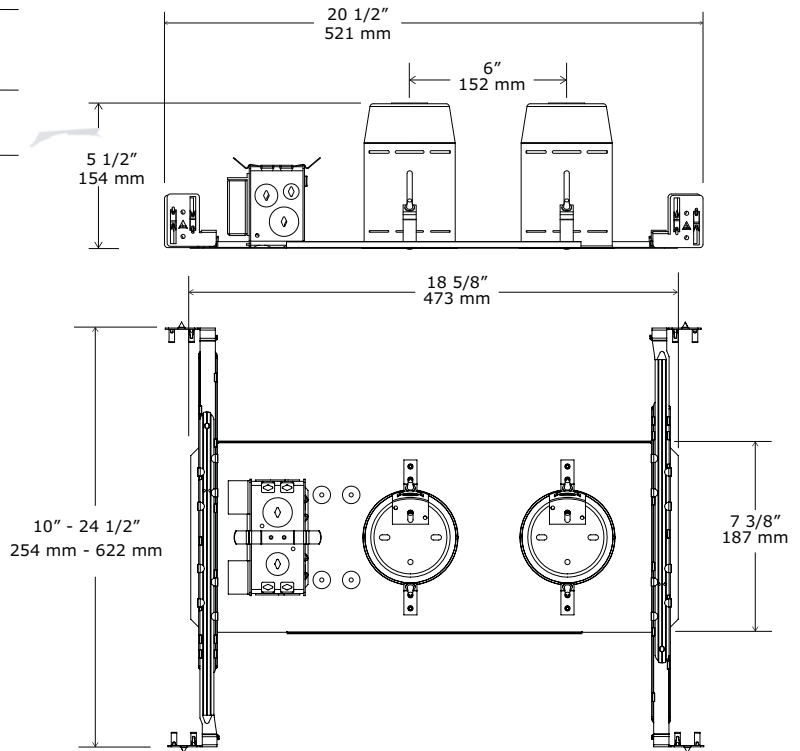
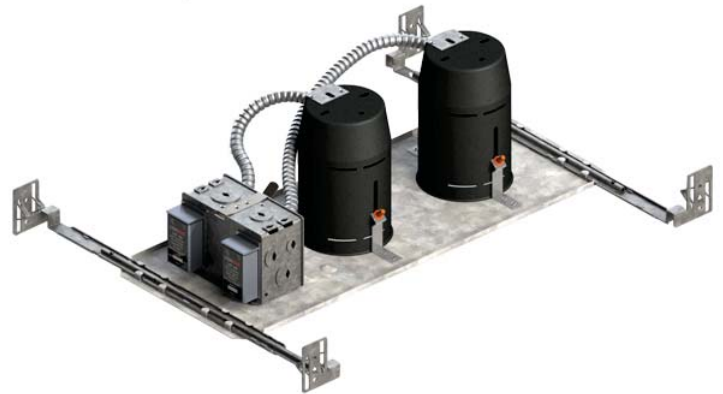


3 1/2" 3000 SERIES

NWD3000LE

DOUBLE-TRIM NEW CONSTRUCTION HOUSING WITH ELECTRONIC TRANSFORMER

	Yes
Damp Location	
	MR16 50W MAX
MR16	
	120 Volts
Voltage	
	Electronic Transformer 120V / 12V
Transformer	
	90°C #25
Thermal Protector	
	3 5/8" (92 mm)
Ceiling cutout	
	E174023
UL LISTED	



COMPATIBLE TRIMS

T3125	T3250
T3145	T3250DG
T3145DG	T3450

TECHNICAL SPECIFICATIONS

0.051" (1.3 mm) thickness galvanized steel.
 Below-ceiling accessible.
 Hooks PAT#CAN 2,088,648 and #USA 5,377,088.
 Installs to ceilings up to 1 1/2" (38 mm) thick.
 Perfect fit into ceiling.
 No light leakage.
 All parts of the housing should be at 3" (76 mm) MINIMUM from insulation (if applicable).

ORDERING CODE: NWD3000LE

Housing type	Series	Housing details
NWD	3000	LE
New construction double-trim housing	3 1/2" 3000 Series	Long housing with electronic converter



Project _____

Representative _____