

# NWUR4-EM

4" URBAĪ Series

“Non-IC”, Air Tight New Construction Housing with Emergency lighting

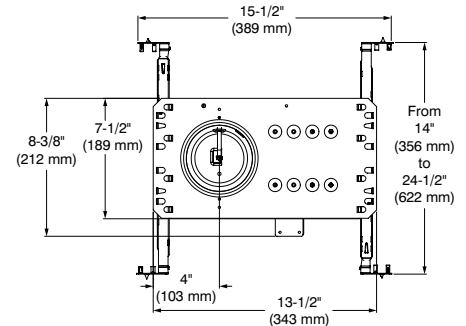
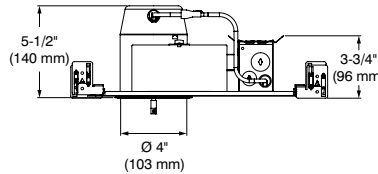
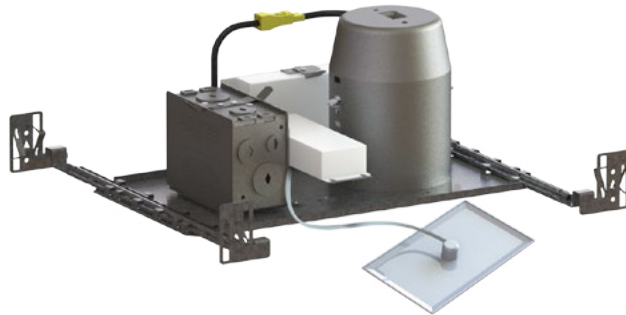


Project \_\_\_\_\_

Notes \_\_\_\_\_

Fixture Type \_\_\_\_\_

Date \_\_\_\_\_



## SPECIFICATIONS

### HOUSING DETAILS

Up to 0,051" (1,3 mm) thick galvanized steel housing.  
26-1/2 in<sup>2</sup> junction box.  
Below-ceiling accessible.

### MOUNTING

**Cutout diameter:**  
**ø 4-1/4" (108 mm)**  
Can fit ceilings up to 2" (51 mm) thick.  
Requires a 6" (152 mm) clearance beyond the ceiling level.  
Snap-in hooks for ease of installation and a perfect fit to ceiling.  
Mounting bars extend from 10" (254 mm) to 24-1/2" (622 mm) to fit in most ceilings.  
No light leakage.

### PERFORMANCE

1: 10W Non-IC - up to 1,018 lms  
2: 15W Non-IC - up to 1,326 lms  
Warm Dimming: 15W - up to 650 lms

### VOLTAGE

120 Volts  
277 Volts

### DIMMING

ELV: 120V only  
0-10V: Sourcing driver (Sinking Control) 120V or 277V

We invite you to consult frequently our Website to find our dimmer compatibility list:  
[www.contrastlighting.com](http://www.contrastlighting.com)

### BATTERY

Test button with 24" wire and decorative plate.  
Runtime: 120 minutes minimum  
Battery lifespan: 5 years

### COMPATIBLE TRIMS

UR4A, UR4B, UR4C, UR4D, UR4E, UR4G, UR4H, UR4J, UR4K.

### CERTIFICATION

- cULus **E343977** for damp locations; wet with shower trim only.
- ASTM E283

### WARRANTY

1 year on components against manufacturing defects.  
5 years on LED arrays and drivers.

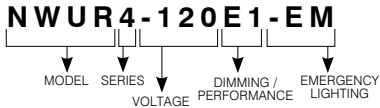
# NWUR4-EM

4" URBAĪ Series

“Non-IC”, Air Tight New Construction Housing with Emergency lighting



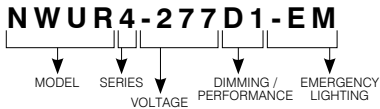
CODIFICATION EXAMPLE FOR 120V



ORDERING CODE for 120V

MODEL	SERIES	VOLTAGE	DIMMING / PERFORMANCE	EMERGENCY LIGHTING
<b>NWUR</b>	<b>4</b>	<b>-120</b>		<b>-EM</b>
<b>NWUR</b> New Construction	<b>4</b> 4" Series	<b>-120</b> 120V	<b>E1</b> ELV / 10W <b>E2</b> ELV / 15W <b>EB2</b> ELV (+Value) / 15W <b>D1</b> 0-10V / 10W <b>D2</b> 0-10V / 15W	<b>-EM</b> Emergency Lighting

CODIFICATION EXAMPLE FOR 277V



ORDERING CODE for 277V

MODEL	SERIES	VOLTAGE	DIMMING / PERFORMANCE	EMERGENCY LIGHTING
<b>NWUR</b>	<b>4</b>	<b>-277</b>		<b>-EM</b>
<b>NWUR</b> New Construction	<b>4</b> 4" Series	<b>-277</b> 277V	<b>D1</b> 0-10V / 10W <b>D2</b> 0-10V / 15W <b>2</b> Non-Dimmable / 15W	<b>-EM</b> Emergency Lighting

# NWUR4-EM

## 4" URBAÏ Series

“Non-IC”, Air Tight New Construction Housing  
with Emergency lighting



### GOOF RINGS

---

For round trims.

**Code:** RR4-03SA (Satin Gold)  
RR4-04BR (Brushed Chrome)  
RR4-11 (Matte White)  
RR4-12BR (Brushed Nickel)  
RR4-13 (Satin Nickel)  
RR4-22 (Matte Black)

Outside diameter:  $\varnothing$  6-1/8" (156 mm)

Inside diameter:  $\varnothing$  4-1/4" (108 mm)

For square trims.

**Code:** RS4-03SA (Satin Gold)  
RS4-04BR (Brushed Chrome)  
RS4-11 (Matte White)  
RS4-12BR (Brushed Nickel)  
RS4-13 (Satin Nickel)  
RS4-22 (Matte Black)

Outside dimensions: 5-1/2" (140 mm) x 5-1/2" (140 mm)

Inside diameter:  $\varnothing$  4-1/4" (108 mm)