

# NWUR4

## 4" URBAĪ Series IC and Air Tight New Construction Housing

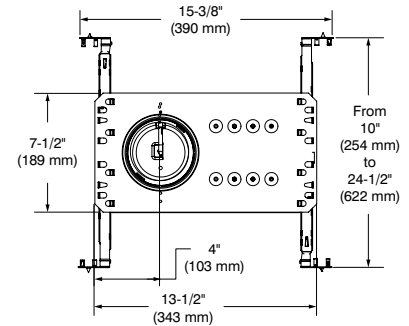
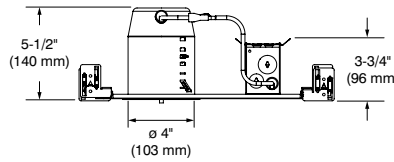


Project \_\_\_\_\_

Notes \_\_\_\_\_

Fixture Type \_\_\_\_\_

Date \_\_\_\_\_



### SPECIFICATIONS

#### HOUSING DETAILS

Up to 0,051" (1,3 mm) thick galvanized steel housing.  
Approved for installation in insulated ceilings and in direct contact with insulating material (except polyurethane) on performance 1 only.  
26-1/2 in<sup>2</sup> junction box.  
Below-ceiling accessible.

#### MOUNTING

**Cutout diameter:**  
**ø 4-1/4" (108 mm)**  
Can fit ceilings up to 2" (51 mm) thick.  
Requires a 6" (152 mm) clearance beyond the ceiling level.  
Snap-in hooks for ease of installation and a perfect fit to ceiling.  
Mounting bars extend from 10" (254 mm) to 24-1/2" (622 mm) to fit in most ceilings.  
No light leakage.

#### POWER

1: 10W IC - up to 1,018 lms  
2: 15W Non-IC - up to 1,326 lms  
Warm Dimming: 15W - up to 650 lms

#### VOLTAGE

120 Volts  
277 Volts

#### DIMMING

ELV: 120V only  
0-10V: Sourcing driver (Sinking Control)  
120V or 277V

We invite you to consult frequently our Website to find our dimmer compatibility list:  
[www.contrastlighting.com](http://www.contrastlighting.com)

#### COMPATIBLE TRIMS

UR4A, UR4B, UR4C, UR4D, UR4E, UR4G, UR4H, UR4J, UR4K.

#### CERTIFICATION

- cULus **E343977** for damp locations; wet with shower trim only.
- ASTM E283

#### WARRANTY

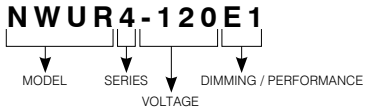
1 year on components against manufacturing defects.  
5 years on LED arrays and drivers.

# NWUR4

## 4" URBAI Series IC and Air Tight New Construction Housing



### CODIFICATION EXAMPLE FOR 120V

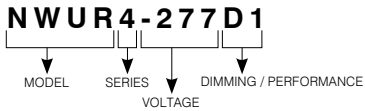


### ORDERING CODE for 120V

MODEL	SERIES	VOLTAGE	DIMMING / PERFORMANCE
<b>NWUR</b>	<b>4</b>	<b>-120</b>	
<b>NWUR</b> New Construction	<b>4</b> 4" Series	<b>-120</b> 120V	<b>E1</b> ELV / 10W <b>E2*</b> ELV / 15W <b>EB2*</b> ELV (+Value) / 15W <b>D1</b> 0-10V / 10W <b>D2*</b> 0-10V / 15W

\* Non-IC rated

### CODIFICATION EXAMPLE FOR 277V



### ORDERING CODE for 277V

MODEL	SERIES	VOLTAGE	DIMMING / PERFORMANCE
<b>NWUR</b>	<b>4</b>	<b>-277</b>	
<b>NWUR</b> New Construction	<b>4</b> 4" Series	<b>-277</b> 277V	<b>D1</b> 0-10V / 10W <b>D2*</b> 0-10V / 15W <b>2*</b> Non-Dimmable / 15W

\* Non-IC rated

# NWUR4

## 4" URBAI Series

### IC and Air Tight New Construction Housing



#### GOOF RINGS

---

For round trims.

**Code:** RR4-03SA (Satin Gold)  
RR4-04BR (Brushed Chrome)  
RR4-11 (Matte White)  
RR4-12BR (Brushed Nickel)  
RR4-13 (Satin Nickel)  
RR4-22 (Matte Black)

Outside diameter:  $\varnothing$  6-1/8" (156 mm)

Inside diameter:  $\varnothing$  4-1/4" (108 mm)

For square trims.

**Code:** RS4-03SA (Satin Gold)  
RS4-04BR (Brushed Chrome)  
RS4-11 (Matte White)  
RS4-12BR (Brushed Nickel)  
RS4-13 (Satin Nickel)  
RS4-22 (Matte Black)

Outside dimensions: 5-1/2" (140 mm) x 5-1/2" (140 mm)

Inside diameter:  $\varnothing$  4-1/4" (108 mm)