

# The Bright Choice

ECORENO LED Conversion Kit for 4" recessed housings

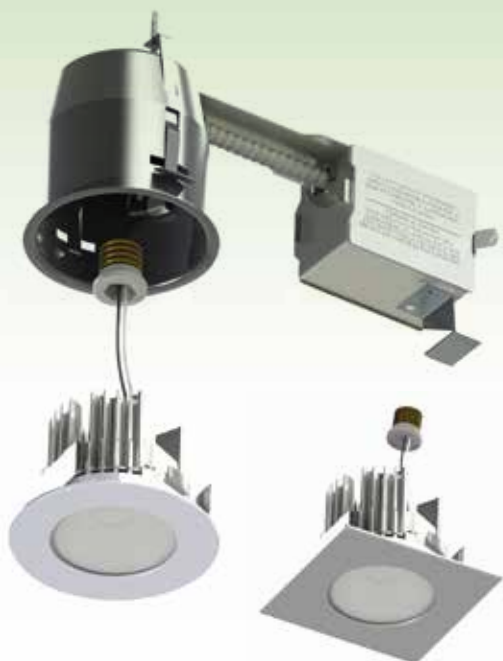


5-YEAR WARRANTY

# ECORENO

**It only takes a minute to replace a medium base PAR20 trim with a high performance energy saving LED unit!**

This conversion trim kit allows you to transform any Contrast Lighting or any other manufacturer's 4-inch recessed luminaire into a dedicated LED square or round unit with frosted lens. The plug and play wiring system will significantly reduce your conversion time. All you have to do is to snap out the existing trim, remove the lamp, screw the adapter (included) into the luminaire socket... a final click with the quick connect plug and the luminaire is ready to be used. Surpasses any existing 50 watt PAR20 lumen output, making it a bright choice!



*Contrast Lighting is synonymous with confidence. The company offers a vast choice of recessed and pendant luminaires, decorative glass shades as well as wall mount fixtures. All products are manufactured in Québec and are of the highest quality. Contrast Lighting product excellence can be evidenced in its vertically integrated manufacturing and its many energy-efficient product innovations that allow the Company to make a major contribution towards the protection of the environment.*

## SPÉCIFICATIONS

TRIMS	Painted or plated die-formed steel
LENS	Standard frosted lens
HEAT SINK DISSIPATION	Very high quality injected aluminum ensuring a maximum heat dissipation
DRIVER	Constant current output with forward voltage (Vf) from 16 to 24VDC, 375 mA, class 2. 120VAC input
SOURCE	LED, LUMILED LUXEON® K chip offering freedom from Binning with 3 step MacAdam ellipse color performance control. Exceeds ENERGY STAR® lumen maintenance requirements. Choice of 2700K, 3000K and 4000K color temperatures.
CRI	83
LUMEN OUTPUT	<b>2 700 K</b> : 596 lumens, 60 lumens/watts <b>3 000 K</b> : 651 lumens, 65 lumens/watts <b>4 000 K</b> : 700 lumens, 70 lumens/watts
POWER CONSUMPTION	10 watts to 120V c.a.
LIFESPAN	50 000 hours
COMPATIBILITY	Suitable for converting most 4 inch diameter recessed housings (For a complete list, please consult our Web site)
DIMMING	Fully dimmable, compatible with most Incandescent, Electronic Low Voltage (ELV) dimmers.  Please see Web site for compatibility chart.

Approved for damp locations, cold and exterior locations where fixtures are not subjected to direct rain or snow exposure like under soffits. Marine Grade is recommended.

# ECORENO

## ORDERING INFORMATION

Contrast Lighting products are available all over North America. Stock items can be delivered anywhere in Canada or in the U.S. within a few days.



### How to Order

For information on distributors, local representatives or stores best able to serve your needs, please call our customer service at: 1 888 839-4624 or visit our Website at [www.contrastlighting.com](http://www.contrastlighting.com).

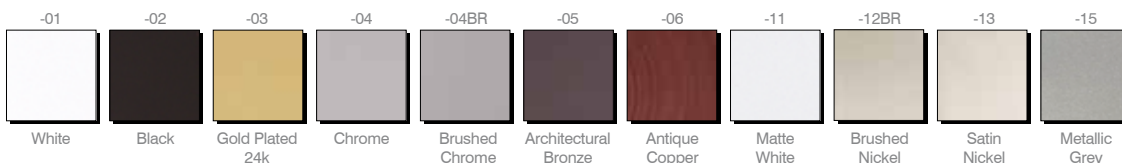
#### ORDERING CODE for Conversion Trim Kit

Example: **RFITLED20-02-2**

CONVERSION TRIM	SOURCE	MODEL TYPE		FINISH		MARINE GRADE	COLOR TEMPERATURE
RFIT	LED						
<b>RFIT</b>	<b>LED</b>	<b>20</b>	Round	<b>-01</b>	White	<b>MG</b> May be applied on finishes: -01, -02, -05, -06, -11 and -15.	<b>-2</b> 2 700 K
		<b>21</b>	Square	<b>-02</b>	Black		<b>-3</b> 3 000 K
				<b>-03</b>	Gold Plated 24K		<b>-4</b> 4 000 K
				<b>-04</b>	Chrome		
				<b>-04BR</b>	Brushed Chrome		
				<b>-05</b>	Architectural Bronze		
				<b>-06</b>	Antique Copper		
				<b>-11</b>	Matte White		
				<b>-12BR</b>	Brushed Nickel		
				<b>-13</b>	Satin Nickel		
				<b>-15</b>	Metallic Grey		

**MARINE GRADE** - Unless otherwise indicated, trims are for interior, cold and exterior locations where fixtures are not subjected to direct rain or snow exposure like under soffits. MARINE GRADE treatment is recommended. Available with -01, -02, -05, -06, -11 and -15 finishes only.

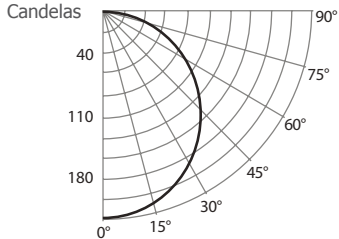
#### FINISHES



# PHOTOMETRIC DATA, LED SPECTRAL DISTRIBUTION AND CHROMATICITY DIAGRAM

## 2 700 K

### CANDLEPOWER DISTRIBUTION



### CONE OF LIGHT

Distance	FC	DIA
06'	6,1	15,1'
08'	3,4	20,1'
10'	2,2	25,2'
12'	1,5	30,2'
14'	1,1	35,2'
16'	0,9	40,3'
18'	0,7	45,3'
20'	0,5	50,3'

### LUMINAIRE

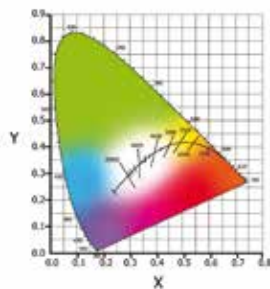
<b>LED</b>	2 700 K
<b>Equivalent Bulbs</b>	35W MR16 50W PAR20
<b>CBCP / Lumens</b>	219 / 596
<b>Watts</b>	<b>120V</b> 9,9W
<b>Operating AMPS</b>	0.086A
<b>Lumen Maintenance</b>	L70 @ 50,000 Hrs
<b>CRI</b>	83
<b>Lumen/Watt</b>	60
<b>Spacing Criteria</b>	1.2
<b>Certificate LM-79-08</b>	6013-001257

### COEFFICIENT OF UTILIZATION - %

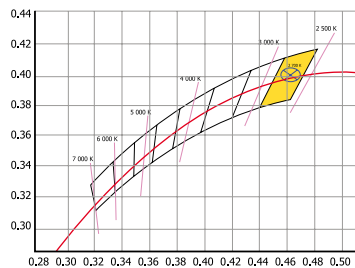
Ceiling Reflect %	80	50	30
<b>Wall Reflect %</b>	<b>50 30</b>	<b>50 30</b>	<b>50 30</b>
<b>RCR</b>	0	119 119	111 111 106 106
	2	94 88	88 84 85 81
	4	74 66	71 64 68 63
	6	60 51	57 50 55 49
	8	49 40	47 39 45 39
	10	40 32	39 32 38 31

Zonal Cavity Method Effective Floor  
Cavity Reflectance 20%

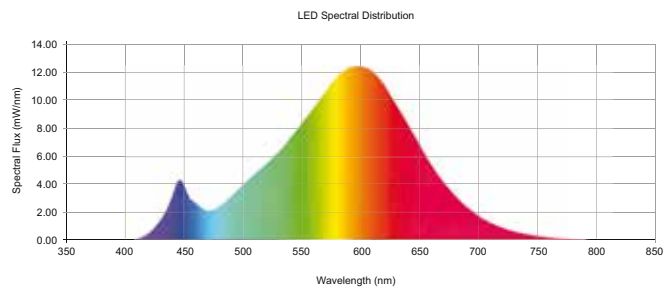
### Color Binning Information



Chromaticity Diagram CIE 1931



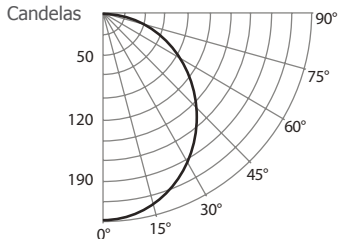
Binning within 7-step ANSI  
MacAdam ellipses.



LED Spectral Distribution

## 3 000 K

### CANDLEPOWER DISTRIBUTION



### CONE OF LIGHT

Distance	FC	DIA
06'	6,6	15,1'
08'	3,7	20,1'
10'	2,4	25,2'
12'	1,7	30,2'
14'	1,2	35,2'
16'	0,9	40,3'
18'	0,7	45,3'
20'	0,6	50,3'

### LUMINAIRE

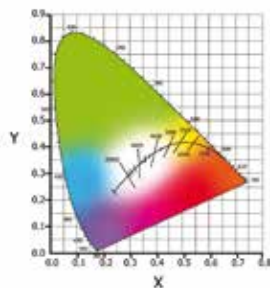
<b>LED</b>	3 000 K
<b>Equivalent Bulbs</b>	35W MR16 50W PAR20
<b>CBCP / Lumens</b>	238.3 / 650
<b>Watts</b>	<b>120V</b> 9,9W
<b>Operating AMPS</b>	0.086A
<b>Lumen Maintenance</b>	L70 @ 50,000 Hrs
<b>CRI</b>	83
<b>Lumen/Watt</b>	65.7
<b>Spacing Criteria</b>	1.2
<b>Certificate LM-79-08</b>	6013-001257

### COEFFICIENT OF UTILIZATION - %

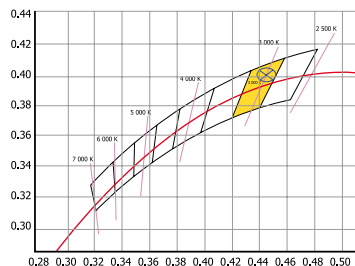
Ceiling Reflect %	80	50	30
<b>Wall Reflect %</b>	<b>50 30</b>	<b>50 30</b>	<b>50 30</b>
<b>RCR</b>	0	119 119	111 111 106 106
	2	94 88	88 84 85 81
	4	74 66	71 64 68 63
	6	60 51	57 50 55 49
	8	49 40	47 39 45 39
	10	40 32	39 32 38 31

Zonal Cavity Method Effective Floor  
Cavity Reflectance 20%

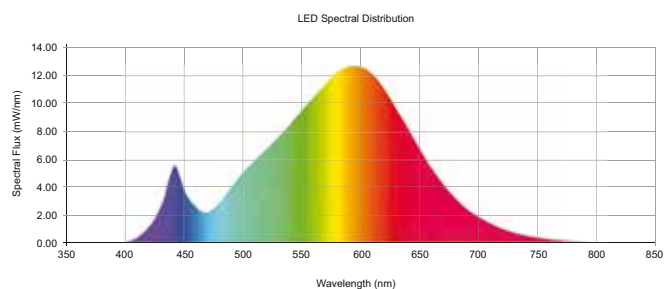
### Color Binning Information



Chromaticity Diagram CIE 1931



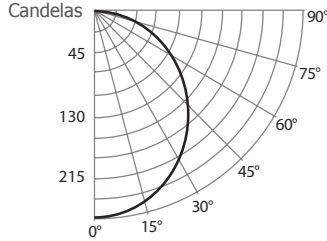
Binning within 7-step ANSI  
MacAdam ellipses.



LED Spectral Distribution

## 4 000 K

### CANDLEPOWER DISTRIBUTION



### CONE OF LIGHT

Distance	FC	DIA
06'	7,2	15,1'
08'	4,0	20,1'
10'	2,6	25,2'
12'	1,8	30,2'
14'	1,3	35,2'
16'	1,0	40,3'
18'	0,8	45,3'
20'	0,6	50,3'

### LUMINAIRE

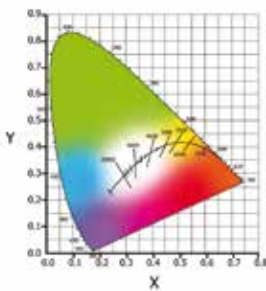
<b>LED</b>	4 000 K
<b>Equivalent Bulbs</b>	50W MR16 50W PAR20
<b>CBCP / Lumens</b>	257.9 / 699
<b>Watts</b>	<b>120V</b> 9,9W
<b>Operating AMPS</b>	0.086A
<b>Lumen Maintenance</b>	L70 @ 50,000 Hrs
<b>CRI</b>	83
<b>Lumen/Watt</b>	70
<b>Spacing Criteria</b>	1.2
<b>Certificate LM-79-08</b>	6013-001257

### COEFFICIENT OF UTILIZATION - %

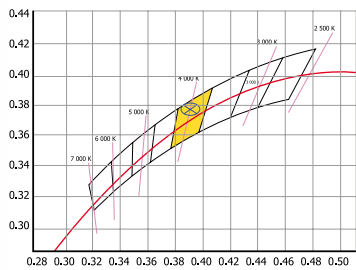
Ceiling Reflect %	80	50	30
<b>Wall Reflect %</b>	<b>50</b>	<b>30</b>	<b>50</b>
<b>RCR</b>	0	119 119	111 111
	106 106	88 84	85 81
	2	94 88	88 84
	4	74 66	71 64
	6	60 51	57 50
	8	49 40	47 39
	10	40 32	39 32

Zonal Cavity Method Effective Floor  
Cavity Reflectance 20%

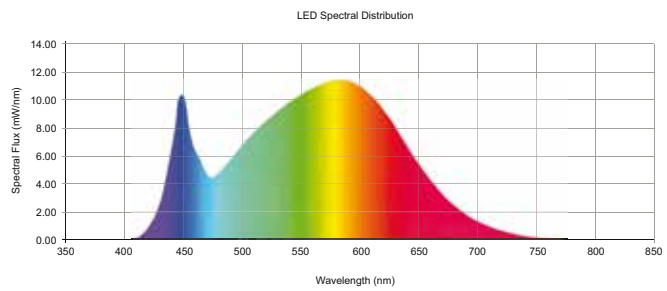
### Color Binning Information



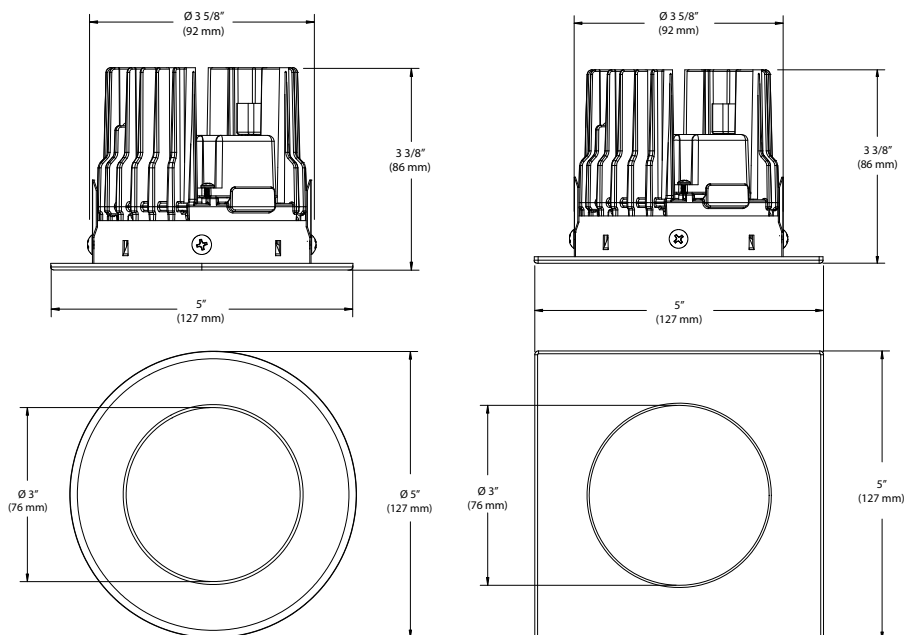
Chromaticity Diagram CIE 1931



Binning within 7-step ANSI  
MacAdam ellipses.



## Technical drawing





## WARRANTY

The models of our ECORENO collection are covered by a 5-year warranty.

### Corporate Headquarters

1009, rue du Parc Industriel  
Lévis (Québec) G6Z 1C5 Canada

Phone: 418 839-4624 Toll free: 1 888 839-4624

Fax: 418 839-7057 Toll free: 1 877 839-7057

[info@contrastlighting.com](mailto:info@contrastlighting.com)  
[www.contrastlighting.com](http://www.contrastlighting.com)

© 2017 Contrast Lighting Inc.  
All rights reserved. Printed in Canada.

