

# RE40MR16

4" - Classic/Evolution

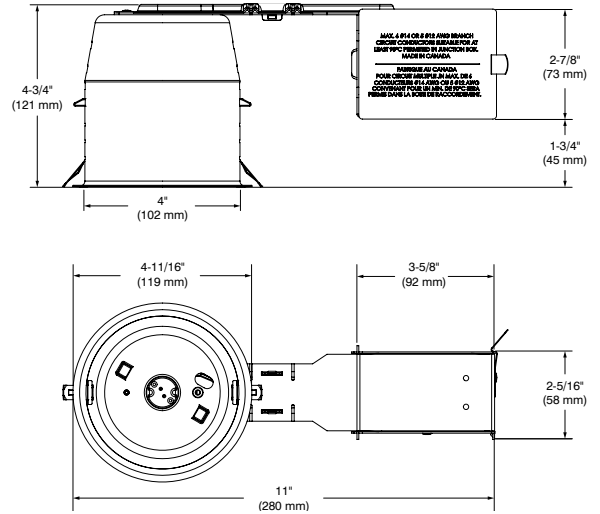
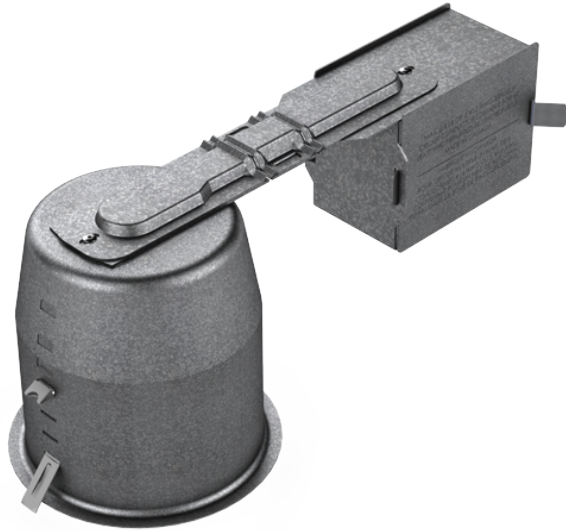
## Remodel Housing IC and Air Tight (10W) for MR16 (LED) and Halogen Lamp

Project \_\_\_\_\_

Notes \_\_\_\_\_

Fixture Type \_\_\_\_\_

Date \_\_\_\_\_



### SPECIFICATIONS

HOUSING DETAILS	18 gauge up to 0.051" (1.3 mm) thick galvanized steel housing. Flexible channel wire bracket made of 20 gauge steel, bending up to 45° vertically for ease of installation in confined spaces. 19-1/2 in <sup>3</sup> junction box can support up to 10 - 14 gauge wires or 8 - 12 gauge wires. Below-ceiling accessible.				
MOUNTING AND SUPPORT	<b>Cutout diameter: ø 4-1/4" (108 mm)</b> Can fit ceilings up to 2" (51 mm) thick. Requires a 4-3/4" (121 mm) clearance beyond the ceiling level. Tool-free snap-in hooks for ease of installation and a perfect fit to ceiling. No light leakage.				
LAMPS	<b>MR16 LED GU5.3 10W MAX (IC &amp; AIR TIGHT)</b>		<b>MR16 GU5.3 37W MAX (NOT IC &amp; NOT AIR TIGHT)</b>		
VOLTAGE	120 Volts    277 Volts				
TRANSFORMER	<b>LTF Electronic Transformers</b> <b>120V-10W:</b> TA15WA12LED65B15 <b>120V-37W:</b> TA60WA12LED65B15 <b>277V-10W:</b> TE15WA12LED65B15 <b>277V-37W:</b> TE60WA12LED65B15				
DIMMING	Only use ELV type. (To use the dimming option, please refer regularly to the lamp manufacturer compatibility list).				
COMPATIBLE TRIMS	R2000	R2100	S2000	S2100	T2000
CERTIFICATION	<ul style="list-style-type: none"> <li>cULus for damp locations; wet locations for shower trims (7W) only (for LED lamps)</li> <li>cULus for damp locations; wet locations for shower trims (20W) only (for halogen lamps)</li> <li>Certified Air Tight ASTM E283 (10W MAX)</li> </ul>				
WARRANTY	3-year limited warranty on the electronic transformer and 1-year on components				

# CONTRASTE

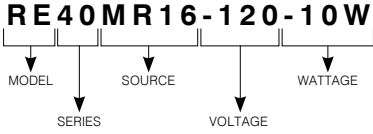
# RE40MR16

4" - Classic/Evolution

Remodel Housing IC and Air Tight (10W) for MR16 (LED) and Halogen Lamp



CODIFICATION EXAMPLE



ORDERING CODES

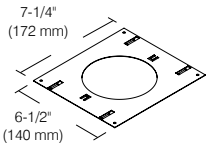
MODEL	SERIES	SOURCE	VOLTAGE	WATTAGE
<b>RE</b>	<b>40</b>	<b>MR16</b>		
RE Remodel Housing	40 4" Series	MR16 MR16 LED GU5.3 MR16 GU5.3	-120 120 Volts (ELV) -277 277 Volts (ELV)	-10W 10W (LED) -37W 37W (Halogen) *

\*Not for isolated and air tight ceiling.

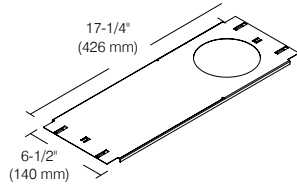
MOUNTING PLATES

Ceiling cutout:  $\varnothing$  4-1/4" (108 mm)

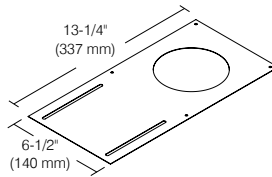
**Code: P2000**  
(Mounting Bars required)



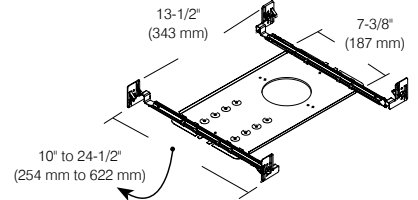
**Code: P2000L**  
(Mounting Bars required)



**Code: P2000N**  
(Mounting Bars NOT required)



**Code: P2000NW**  
(Mounting Bars INCLUDED)



MOUNTING BARS

**Short Bars Adjustable (2 units)**  
From 13-1/2" (343 mm) to 21-3/4" (553 mm)



**Long Bars Adjustable (2 units)**  
From 19-1/2" (495 mm) to 34" (863 mm)



**Interlocking Adjustable Bars (2 pairs)**  
From 10" (254 mm) to 24-1/2" (622 mm)



# RE40MR16

4" - Classic/Evolution

Remodel Housing IC and Air Tight (10W) for MR16 (LED)  
and Halogen Lamp



## GOOF RINGS

Goof rings correct the openings too large or damaged ceiling cutout.

All goof rings are available in all Contraste finishes.  
Add finish color code at the end of the goof rings code.  
Ex.: RON2000-06

For round trims  
**Code: RON2000**



Outside diameter:  $\varnothing$  6-1/8" (156 mm)  
Inside diameter:  $\varnothing$  4-1/8" (105 mm)

For square trims  
**Code: RON2100**



Outside dimensions: 5-1/2" (140 mm) x 5-1/2" (140 mm)  
Inside diameter:  $\varnothing$  4-1/8" (92 mm)

# CONTRASTE